

Tenda



W15-Pro

AX3000 Wi-Fi 6 Wireless In-Wall Access Point

Link
More



W15-Pro

AX3000 Wi-Fi 6 Wireless In-Wall Access Point

Product Description

W15-Pro is a Gigabit dual-band panel AP based on the new Wi-Fi 6 standard; it can support 160MHz bandwidth, which is twice that of ordinary Wi-Fi 6 products, and the wireless rate is up to 3000Mbps; it also supports fast roaming, which can be automatically selected Better quality wireless network; just one network cable, you can enjoy both wireless and wired network; and the double-sided tape installation method is added, which is a wise choice for you to deploy high-performance WLAN network.

Key Features

- Support k/v/r fast roaming
- Support IPTV penetration
- Flow control function
- Double-sided tape installation
- Wireless rate 3000Mbps
- Support Mesh technology

Highlights



Support k/v/r fast roaming, seamless WiFi switching

Support roaming agreement, can automatically discover and switch wireless networks with better quality, network switching without feeling.



Support IPTV penetration, network TV and wireless Internet access do not interfere with each other

The AP supports IPTV and provides a wired network port that is isolated from the wireless network. With one network cable, you can enjoy the wireless network and network TV at the same time. No longer facing the embarrassing situation of not being able to use both services at the same time when purchasing IPTV services and network services.



3G high-speed Wi-Fi, the speed is increased by 2.5 times

Both 2.4 GHz and 5 GHz dual-band support the new generation of Wi-Fi6 standard, using higher standard hardware equipment, the dual-band concurrent wireless rate is as high as 3Gbps, which is 2.5 times that of the previous generation standard AP (AC1200).



Support Mesh technology, rapid deployment and installation

The peripheral devices are automatically discovered when the power is turned on, and the network can be quickly formed. There is no need to smash the wall and wiring, and the deployment and installation between multiple devices can be completed in 2 minutes.

Highlights



Double-sided tape installation, saving time and effort

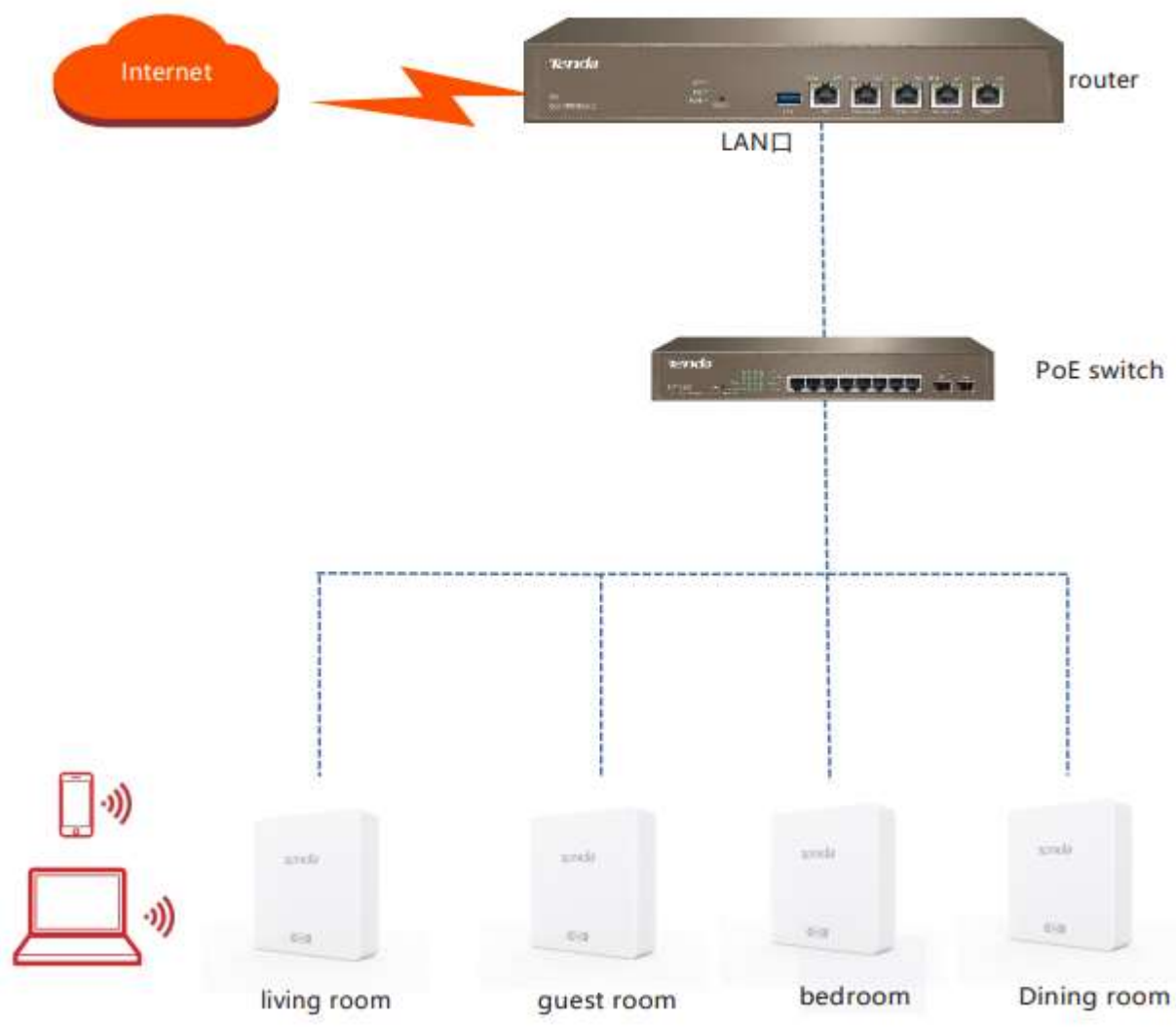
Add the double-sided tape installation method, through the double-sided tape on the back of the AP, it can be directly attached to the wall with a cassette, no need to use a screwdriver, and it will not damage the wall.



Traffic control to improve user online experience

By controlling the uplink and downlink rates, it avoids the situation that the network speed of other terminals is slow when uploading or downloading large files, ensuring the network speed of each user and improving the Internet experience.

Application environment



Technical Specifications

Product Information	
Model	W15-Pro
Category	In-wall
Dimensions	86*86*32mm
Hardware Specifications	
Frequency bands	2.4GHz(DSSS/OFDM/OFDMA): 2412MHz-2472MHz(CH1-CH13) 5GHz(OFDM/OFDMA): 5180MHz-5350MHz(CH36-CH64)
Wireless standards	IEEE 802.11a/b/g/n/ac/ax
2.4 GHz data rate	1-574 Mbps
5 GHz data rate	6-2402 Mbps
Channel width	20 MHz/40 MHz/80 MHz
MU-MIMO	2X2 MU-MIMO
Ethernet port	One 10/100/1000 Mbps LAN Port (PoE) One 10/100/1000 Mbps LAN Port
Button	1*Reset
LED indicator	Bi-Color LEDs
Max. power consumption	8.5W
Power supply standard	IEEE 802.3af PoE, DC 12V 1A
Concurrent clients	256
2.4 GHz Antenna gain	4 dBi
5 GHz Antenna gain	5 dBi
Transmit Power	2.4 G: <0.158W(EIRP); 5 G: <0.316W(EIRP)
Modulation	DSSS/OFDM/OFDMA
2.4 GHz 802.11b RX sensitivity	-95.5 dBm
2.4 GHz 802.11n (MCS7) RX sensitivity	-72.5 dBm
5 GHz 802.11a RX sensitivity	-97.5 dBm
5 GHz 802.11n (MCS7) RX sensitivity	-77.5 dBm

Software Specifications

Operating mode	AP, Client+AP
Hide SSID	Supported
Max. No. of SSID	2.4 GHz: 8 5 GHz: 8
OFDMA	Supported
Beamforming	Supported
TWT	Supported
Fast roaming	Supported
802.11 k/v/r	Supported
WEP	Supported
WPA-PSK	AES/TKIP
WPA2-PSK	AES/TKIP
WPA3-SAE	AES
WPA	Supported
WPA2	Supported
Access control	MAC address-based
Adjustable power transmit	Supported
Frequency analysis	Supported
AP isolation	Supported
Connected clients control	Supported
Weak signal terminal rejection	Supported
Priority access to 5GHz	Supported
WMM	Supported
VLAN tagging for SSID	Supported
LED indicator control	Supported
Diagnostics tool	Ping
Cycle reboot	Supported
Device management	Web UI

Software Specifications

System logs	Supported
Firmware upgrade	Local and AC upgrade
Reboot	Local and AC reboot
Reset	Local and AC reset
Backup configuration	Supported
Restore configuration	Supported

Operating Environment

Default login IP address	192.168.0.254
Default user name	admin
Default password	admin
Operating temperature	-10°C - 40°C
Operating humidity	(10% - 90%) RH, non-condensing
Storage temperature	-30JH - 70JH
Storage humidity	(5% - 90%) RH, non-condensing

SHENZHEN TENDA TECHNOLOGY CO.,LTD.

Tenda Technology Bldg.Int ' I E-City,
#1001 Zhong Shan Yuan Rd.,Nanshan District,Shenzhen China.

[E-mail:support@tenda.com.cn](mailto:support@tenda.com.cn)

Tel:+86-755-2765 7098

Fax:+86-755-2765 7178

PC:518055

